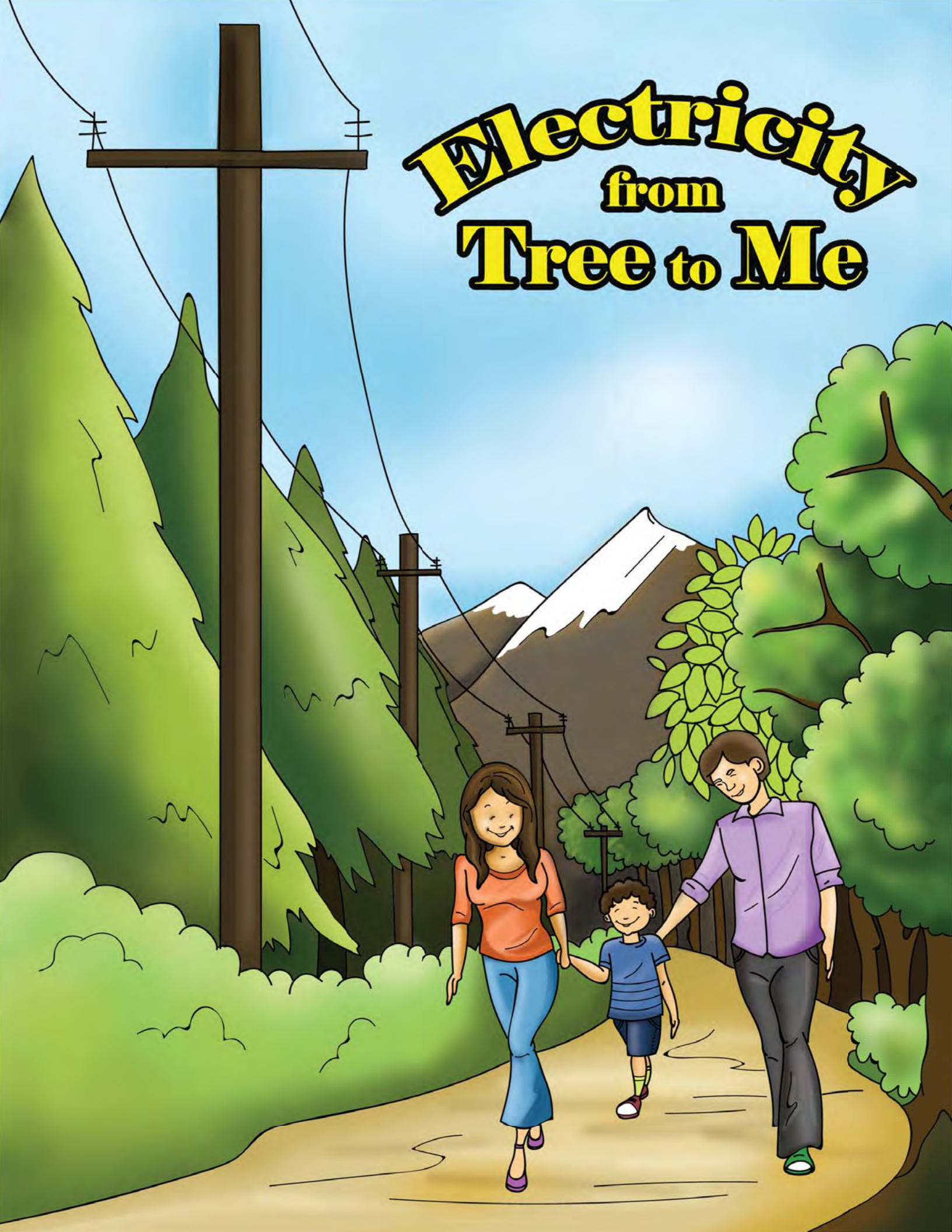
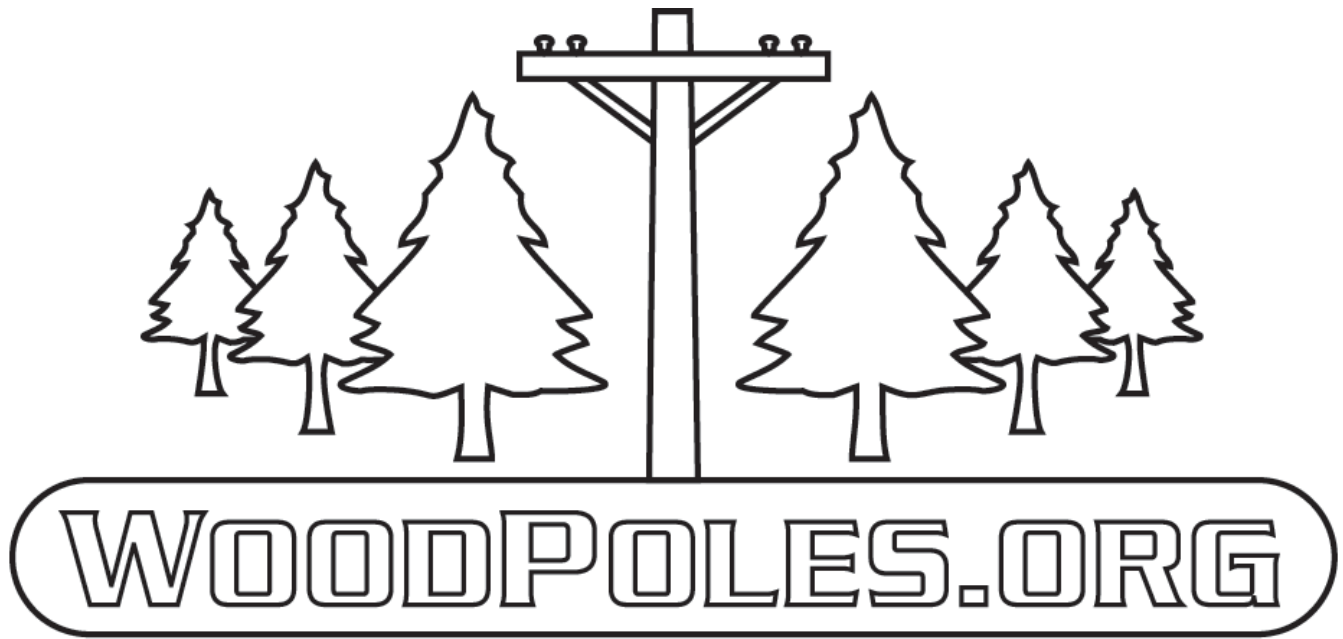


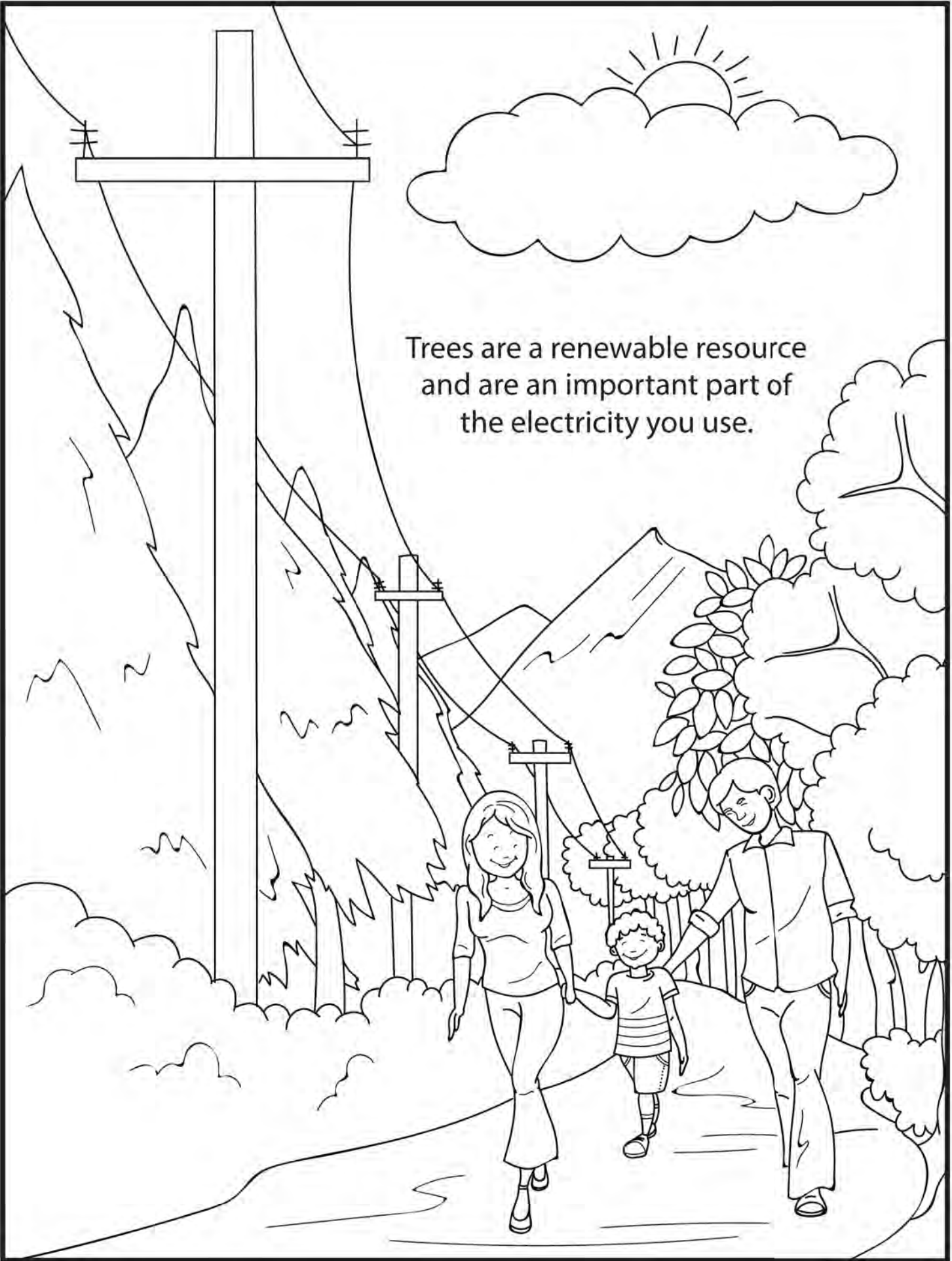
Electricity from Tree to Me



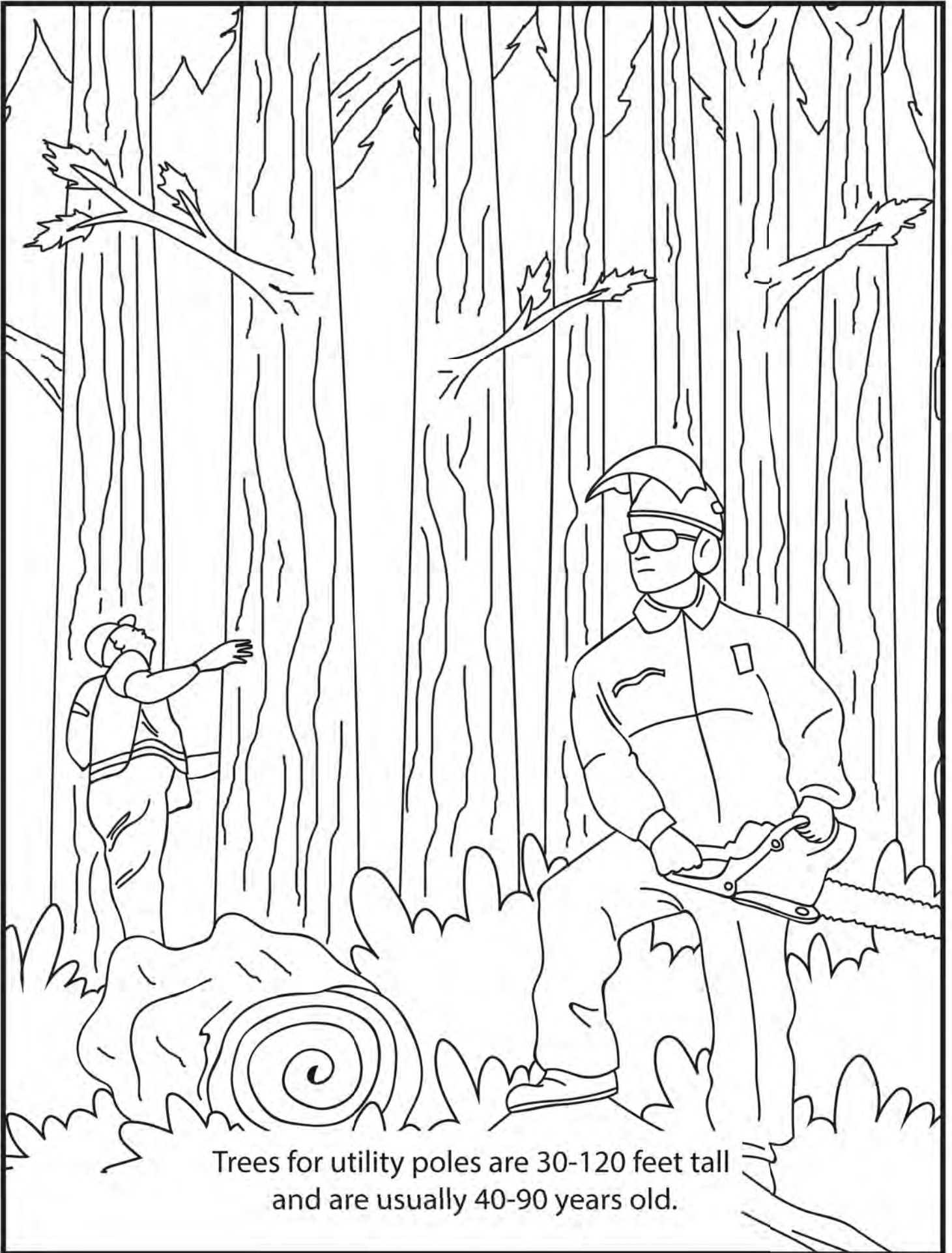


Electricity From Tree To Me is published by the North American Wood Pole Council, representing manufacturers of preservative-treated utility poles in the U.S. and Canada. For more information on wood utility poles, see our website at www.WoodPoles.org

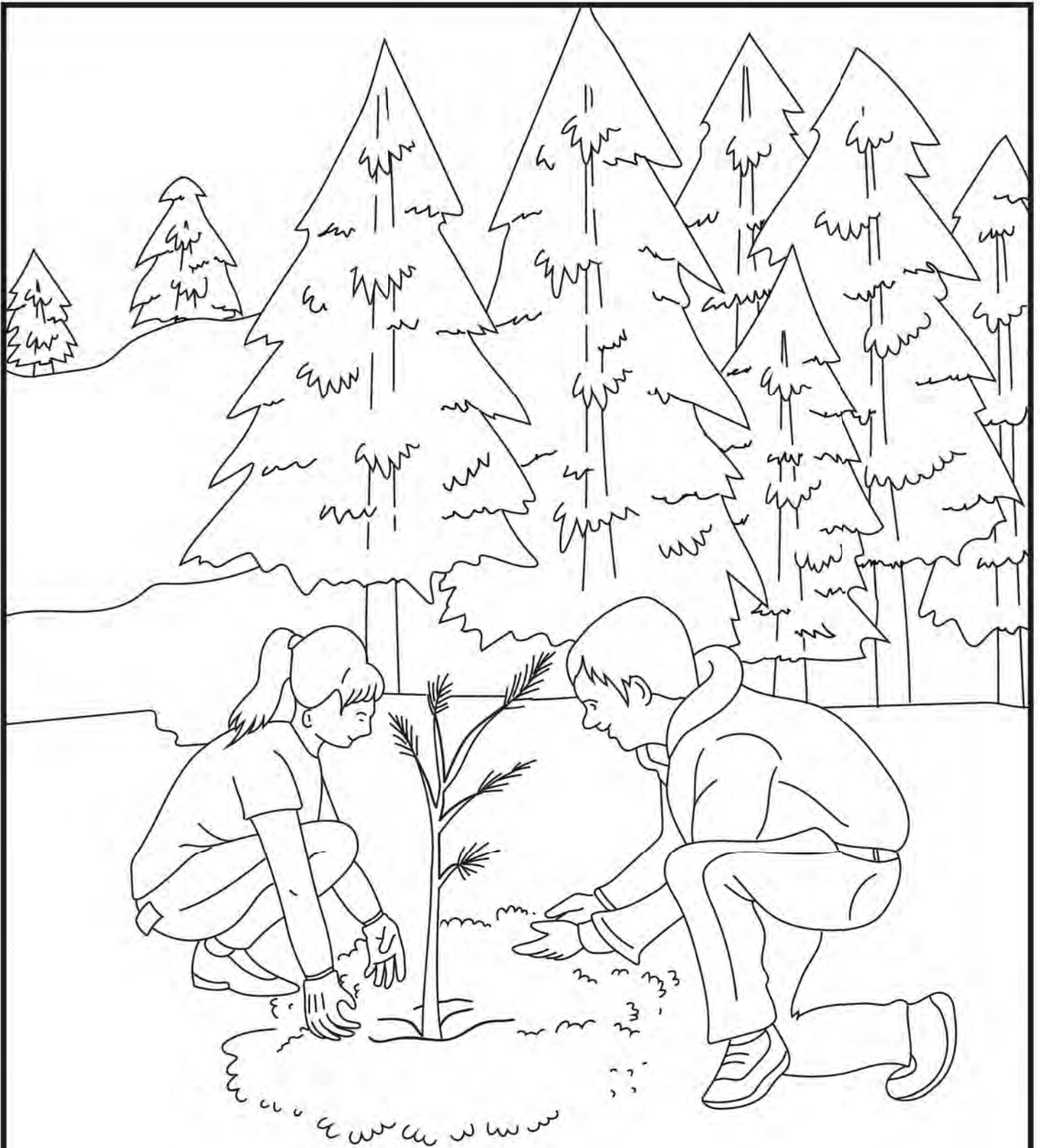
For Utilities: This coloring book can be customized with your utility information on request. For more information, contact us at info@WoodPoles.org



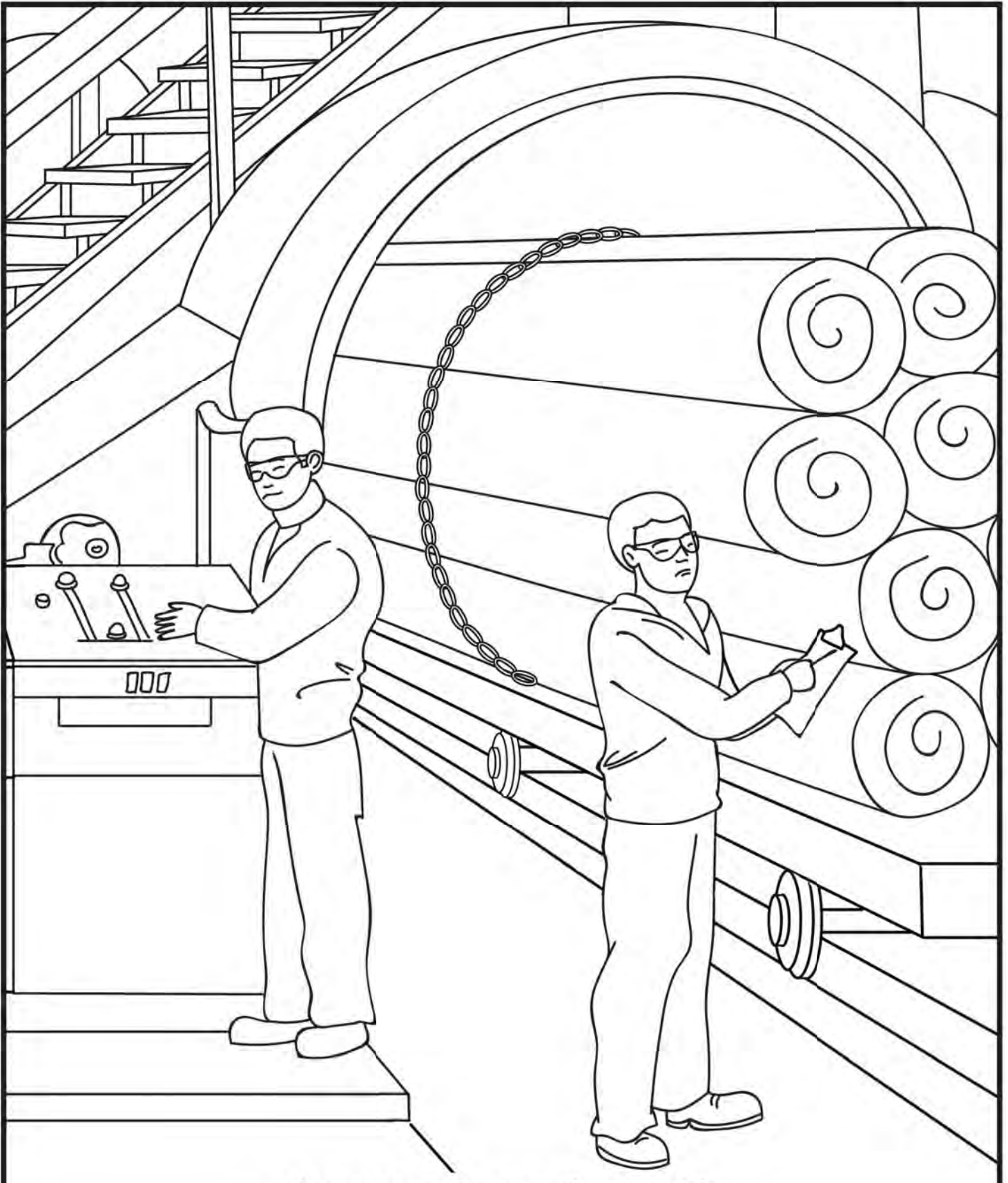
Trees are a renewable resource
and are an important part of
the electricity you use.



Trees for utility poles are 30-120 feet tall and are usually 40-90 years old.

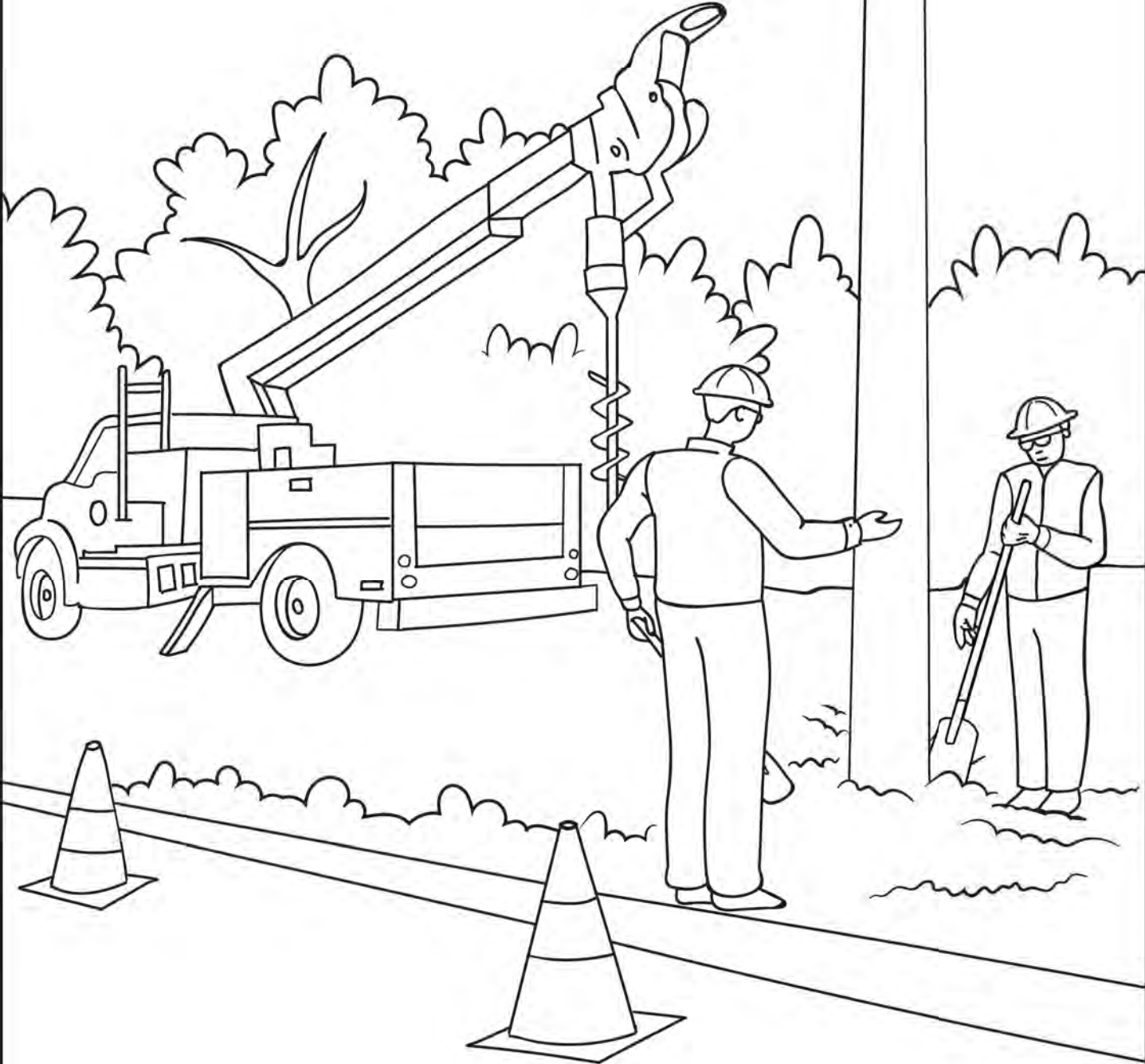


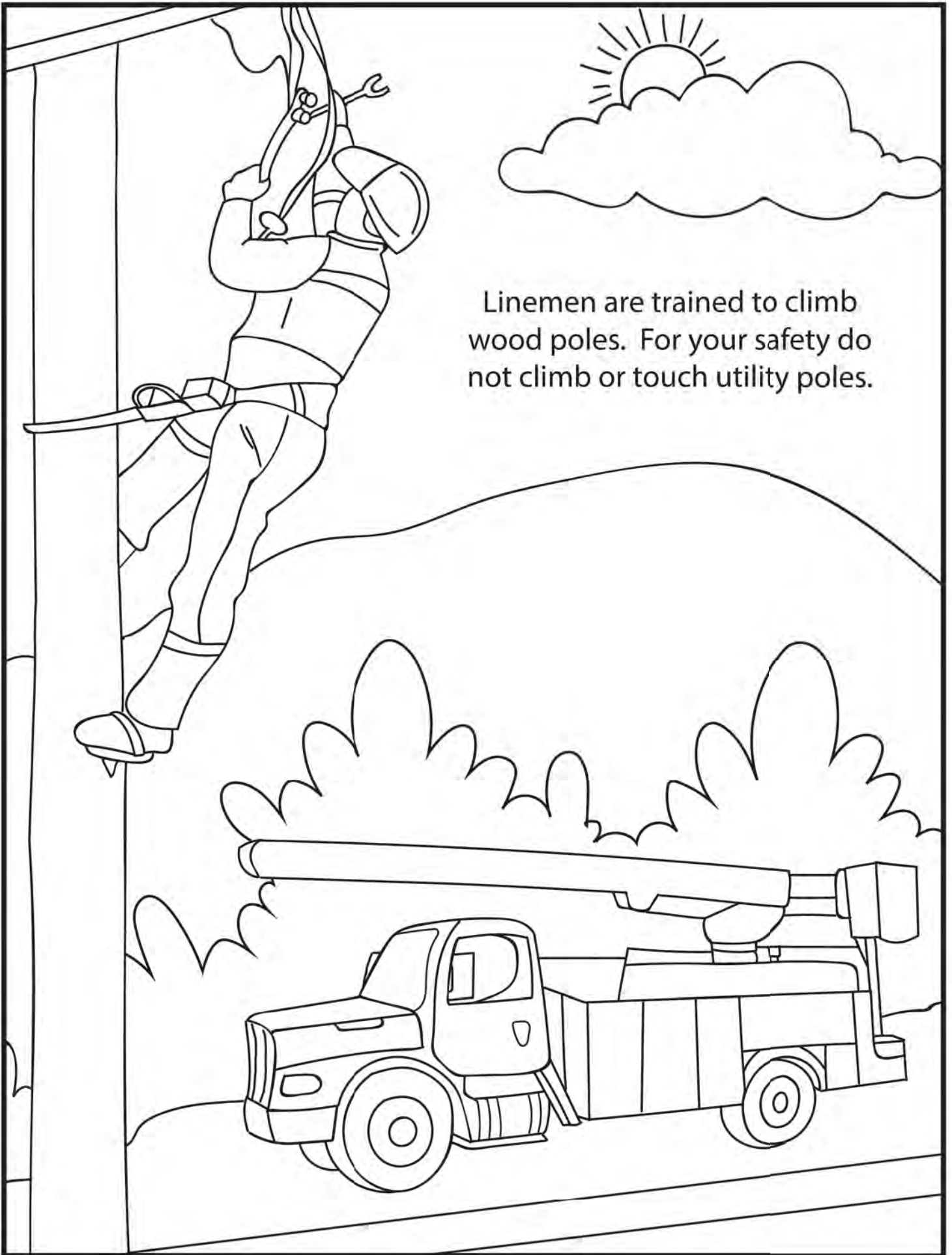
Sustainability means the wood pole lasts so long
a new tree can grow big enough to replace it.



We protect the wood pole with preservatives so that it does not fall over causing you to lose electricity.

Linemen are the ones who install the wood pole, add the crossarm and hang the wires.





Linemen are trained to climb wood poles. For your safety do not climb or touch utility poles.

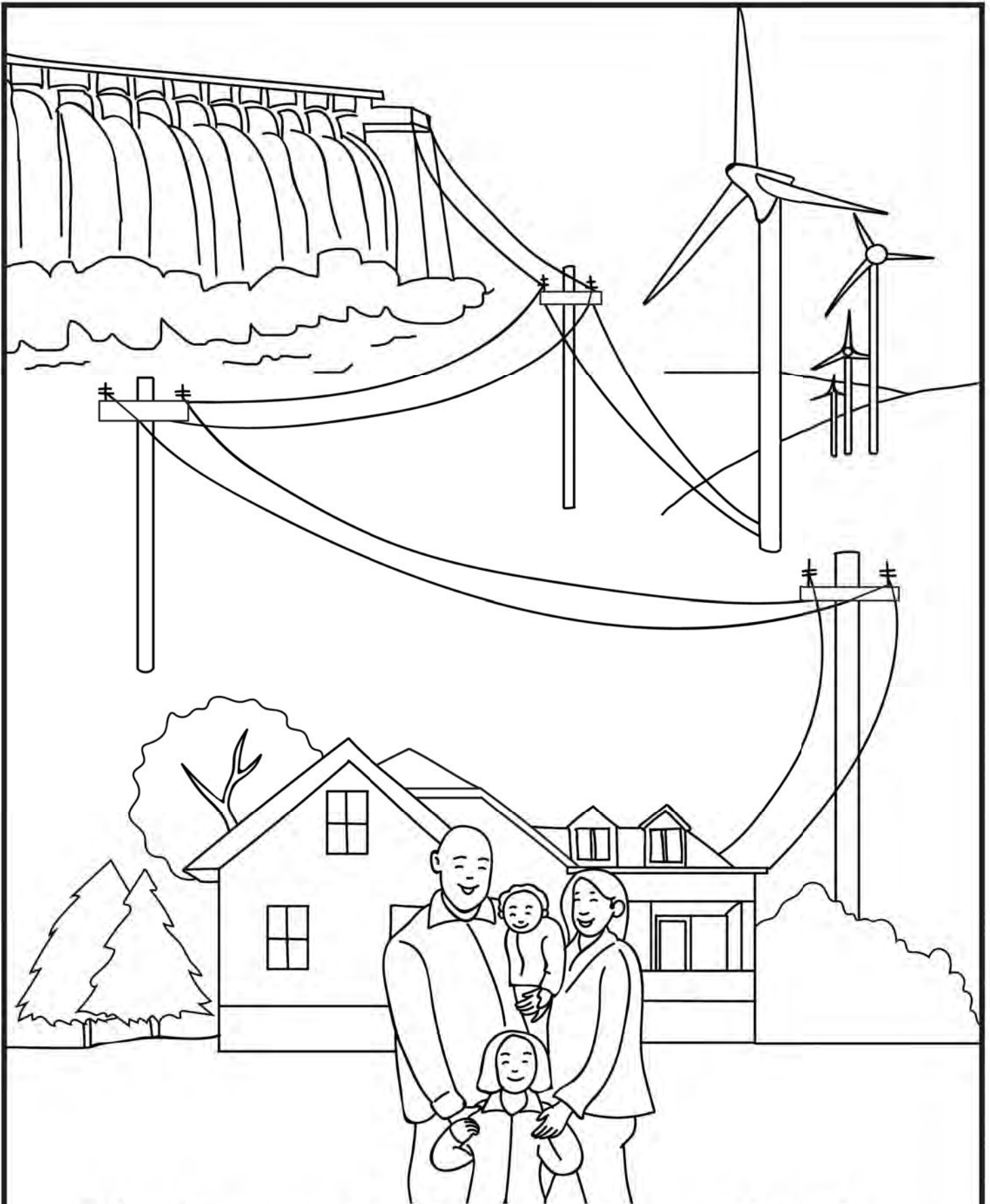
Electricity from Tree to Me

U	T	I	L	I	T	Y	M	U	A	K	Z	N	R	N
I	O	A	K	S	H	X	Y	A	P	R	V	V	T	E
G	V	D	W	N	A	M	E	P	C	G	K	T	E	K
Y	P	G	O	P	T	L	H	W	K	Y	N	L	S	U
N	W	H	O	H	O	Q	T	O	B	E	B	E	A	L
C	R	I	D	P	L	H	M	U	M	A	U	M	Z	W
L	E	D	R	R	S	U	P	N	N	E	Q	V	P	L
J	P	V	V	E	F	K	O	I	E	T	D	R	L	S
F	L	G	V	P	L	R	A	L	L	S	A	E	V	U
S	A	R	D	F	I	T	I	I	E	Q	H	N	E	Z
A	N	L	S	V	S	D	F	N	C	U	C	E	Q	C
E	T	K	N	U	Z	U	I	E	T	V	R	W	R	V
D	I	E	S	S	Q	L	I	M	R	T	O	A	M	X
G	N	E	O	W	R	X	Q	A	I	N	S	B	A	W
S	G	G	G	E	T	V	S	N	C	Y	S	L	N	I
O	J	T	W	W	H	E	W	B	I	C	A	E	B	N
B	E	O	S	A	F	E	F	C	T	C	R	D	Z	U
E	P	I	C	M	Z	Y	N	Z	Y	O	M	E	J	Y
Y	C	M	Y	E	L	A	H	S	F	O	R	E	S	T
R	K	K	N	J	E	S	J	Y	D	L	N	R	G	U

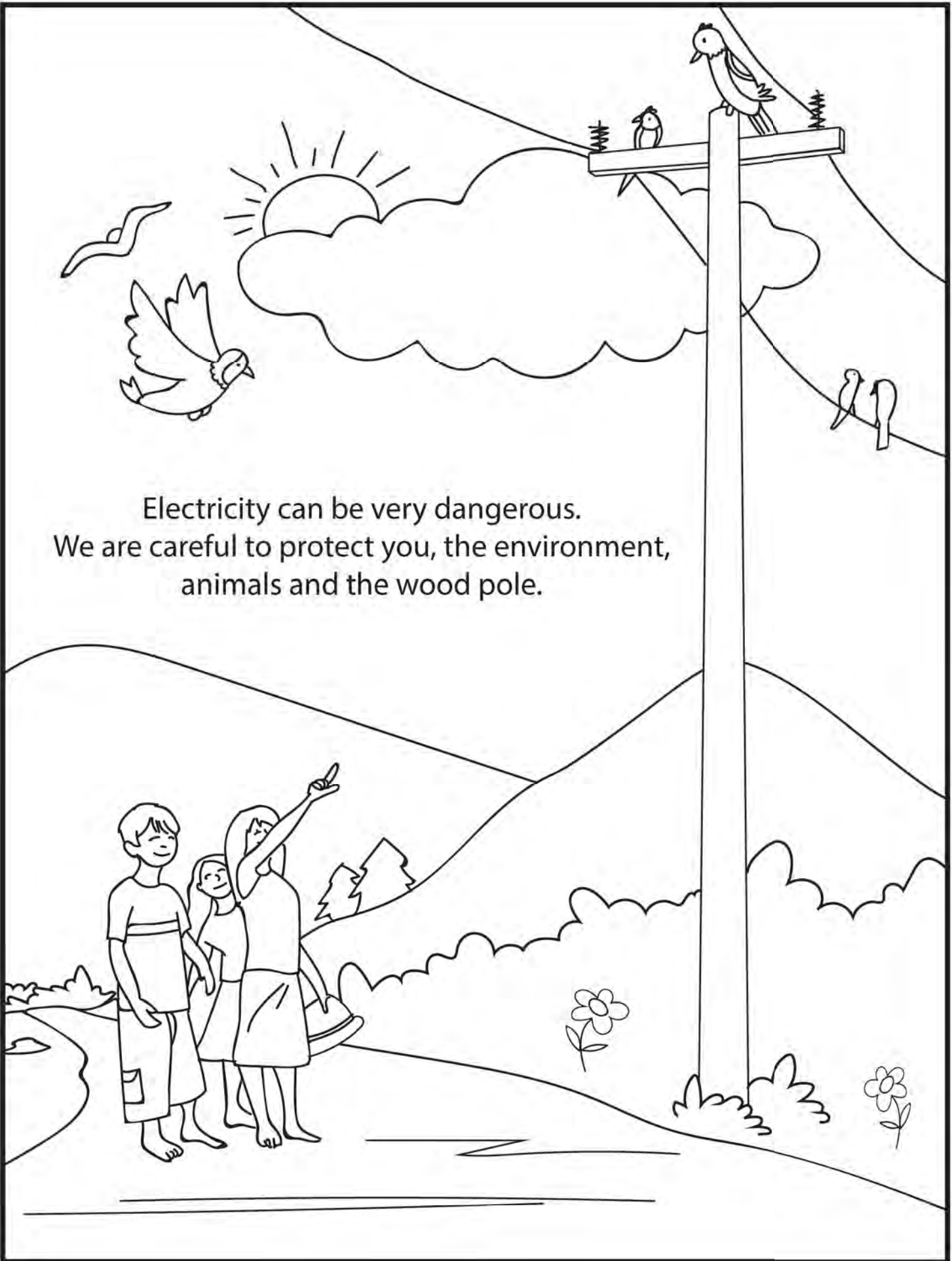
See if you can find these words hiding above

SAFE
POLE
FOREST
REPLANTING
LINEMAN
HOME
CROSSARM
ENVIRONMENT

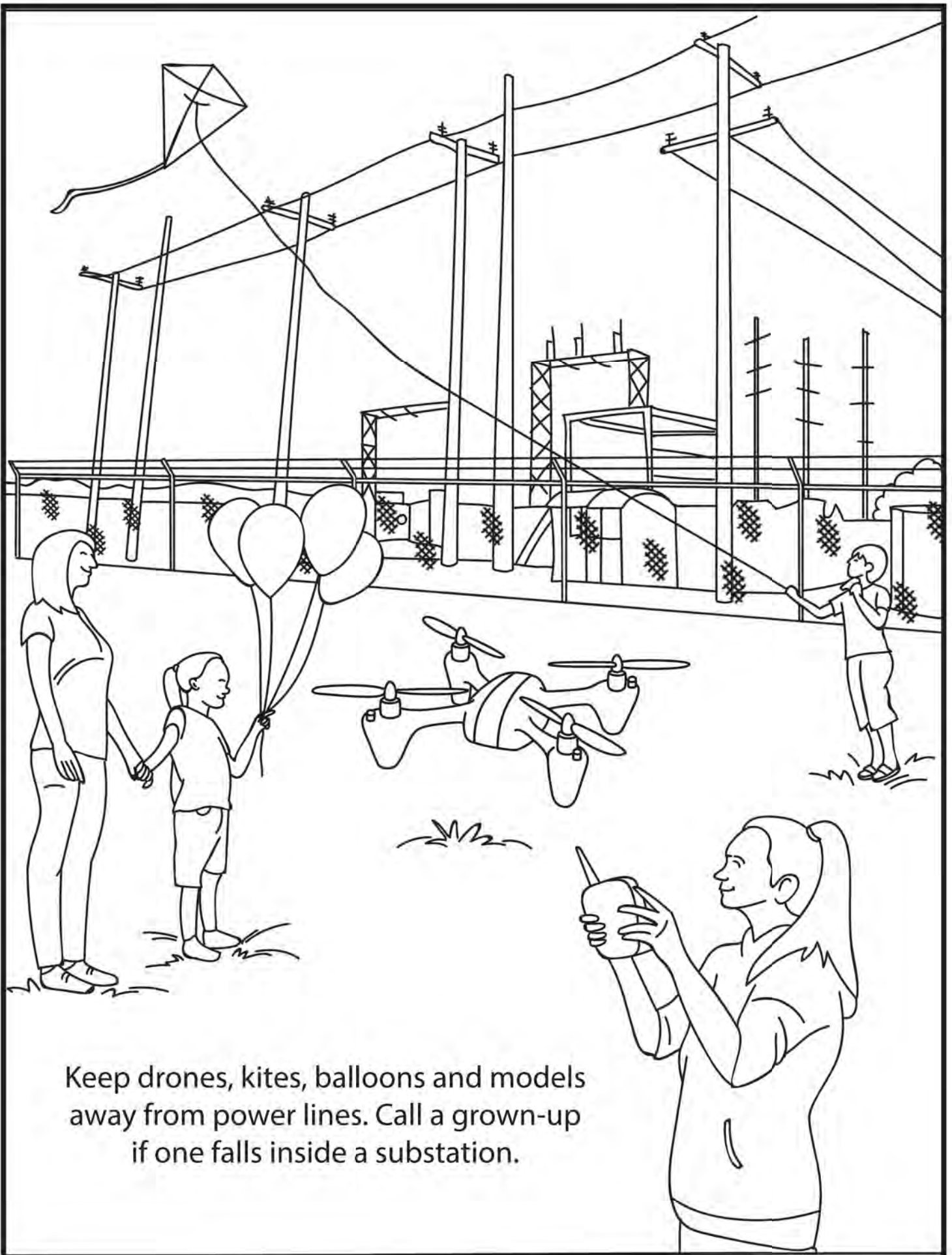
UTILITY
WIRE
TREE
RENEWABLE
POWER LINES
ELECTRICITY
WOOD
SUSTAINABLE



Poles often go unnoticed, but they are important in getting electricity to your home to power your lights, TV and games.

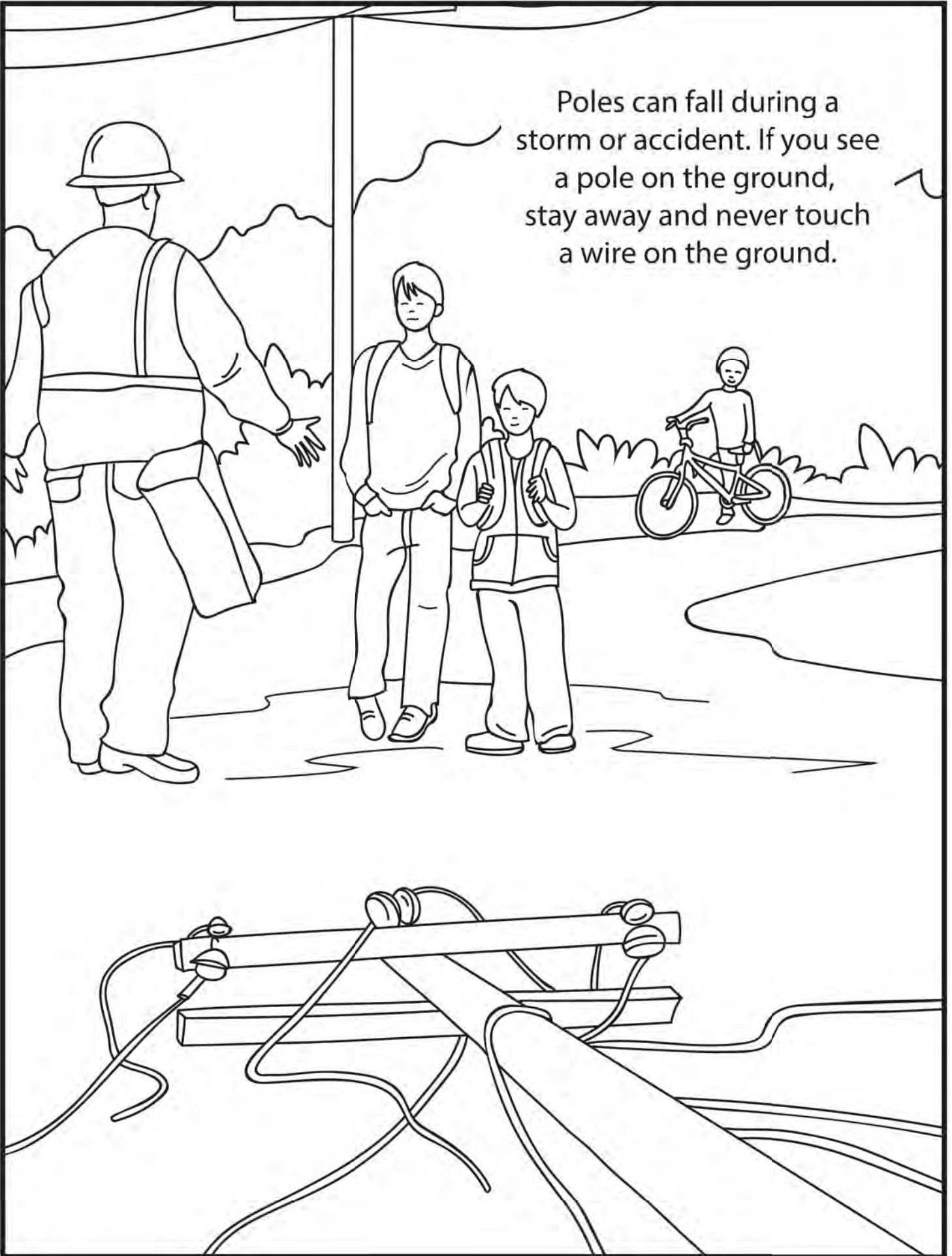


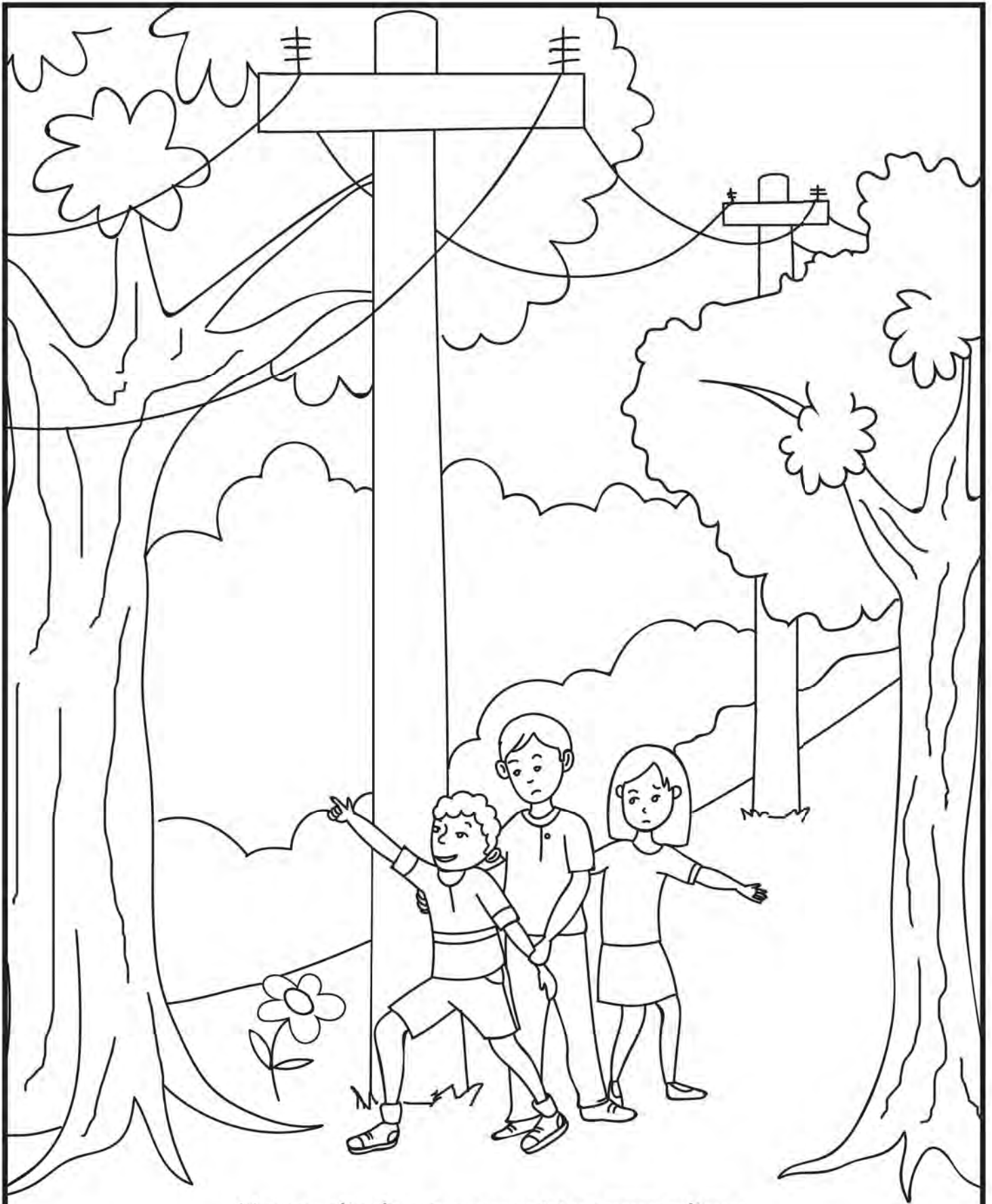
Electricity can be very dangerous.
We are careful to protect you, the environment,
animals and the wood pole.



Keep drones, kites, balloons and models away from power lines. Call a grown-up if one falls inside a substation.

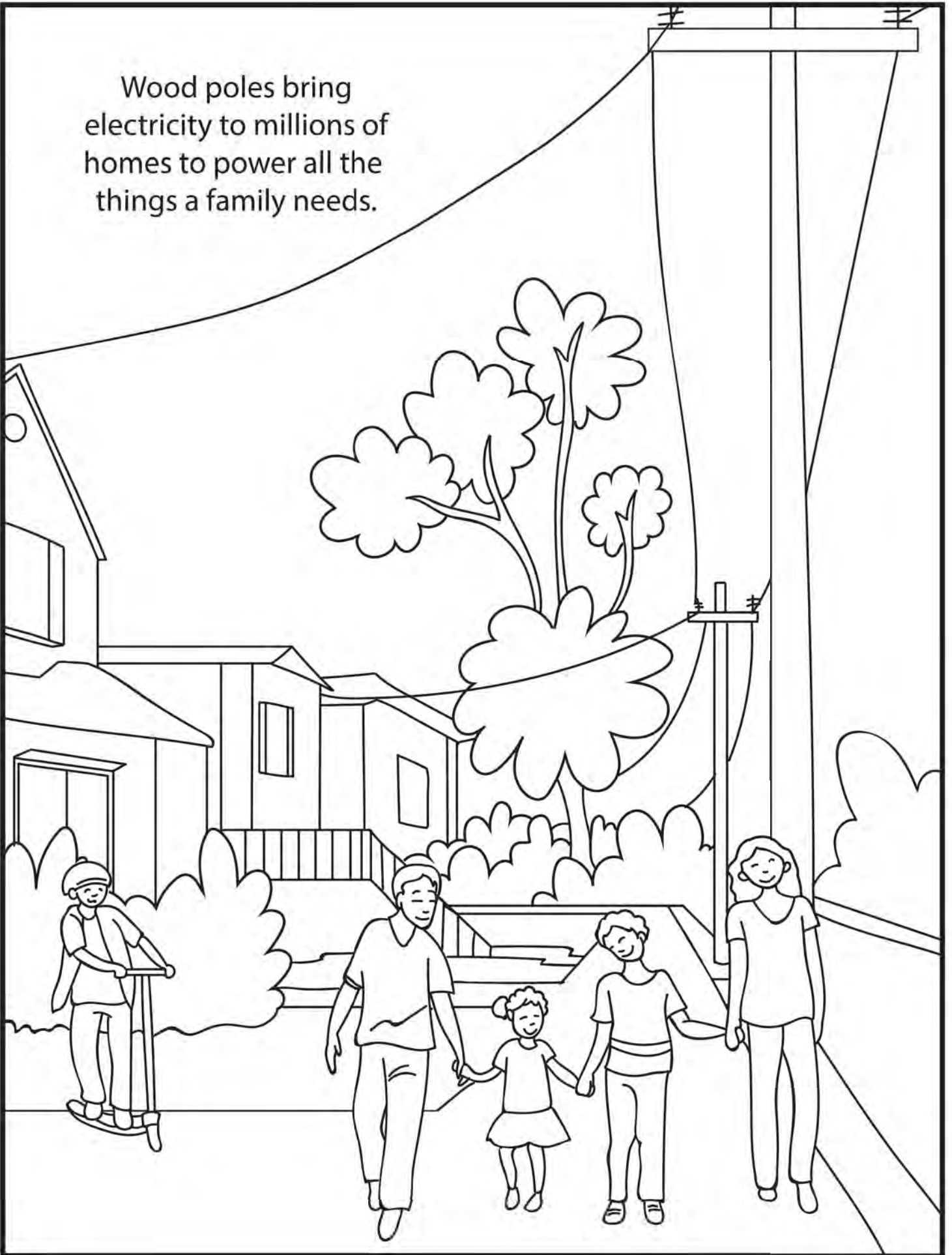
Poles can fall during a storm or accident. If you see a pole on the ground, stay away and never touch a wire on the ground.





Never climb a tree next to power lines.
Be careful of tall objects that can touch power lines.

Wood poles bring
electricity to millions of
homes to power all the
things a family needs.





North American Wood Pole Council

For Utilities: This coloring book can be customized with your utility information on request.
For more information, contact us at [*info@WoodPoles.org*](mailto:info@WoodPoles.org)